



# DISNEYLAND

## *Kid's Guide*

Your ULTIMATE guide for surviving Disneyland with kids.



# Rides with Fright

@ Disneyland

## 01 **Pirates of the Caribbean**

Slightly intimidating queuing area; an intense boat ride with gruesome (although humorously presented) sights and two short, unexpected slides down flumes.

## 02 **Indiana Jones Adventure**

Embark on a fast-paced thrill ride in search of Indiana Jones—enter this cursed temple at your own risk! Visually intimidating, with intense effects and a jerky ride.

## 03 **Space Mountain**

Race through the cosmos in the dark to the edge of the galaxy and back on a thrilling roller-coaster ride. Very intense roller coaster in the dark; Disneyland's wildest ride and a scary rollercoaster by anyone's standards.

## 04 **Star Tours - The Adventures Continue**

Make the jump to hyperspace aboard a 3D space flight to legendary destinations from the Star Wars saga. Extremely intense visually for all ages; one of the wildest in Disney's repertoire.







# Rides with Fright

@ Disney California Adventure

## 01 Grizzly River Run

Embark on a thrilling whitewater raft adventure that splashes you down a roaring California river deep in the mountains. Frightening to guests of all ages. Wet too!

## 02 Guardians of the Galaxy - Mission: Breakout!

Join Rocket on a thrilling mission to rescue the Guardians of the Galaxy from the Collector's fortress. Frightening to guests of all ages.

## 03 Incredicoaster

Join the Incredibles in a mad dash to catch Jack-Jack as he wreaks havoc throughout this high-speed chase! A launched looping roller coaster that's potentially terrifying for guests of all ages.

## 04 Web Slingers: A Spider-Man Adventure

Wrangle rogue Spider-Bots run amok during this mayhem-filled mission at Avengers Campus! Vehicles move through a loud, colorful video game infested with robotic spiders, which may disturb sensitive children.



# STROLLER INFORMATION

YES, YOU NEED ONE



## But do I really need a stroller?

If you have children 6 years of age or younger, I recommend considering using a stroller. While most 6-year-olds have outgrown using a stroller at home, there is a lot of ground to cover in Disney. It has been documented that guests walk between 6-8 miles a day at Disneyland. Clients never regret making this decision and investment for their trip!

### Guidelines for Stroller Use:

- Strollers larger than 31" (79 cm) in width and 52" (132cm) in length are not permitted.
- Stroller wagons are also not permitted.
- Strollers are not allowed on escalators. Use of strollers is permitted on elevators and ramps, available at certain locations.
- A child must be removed from his or her stroller while riding on a parking lot tram. You will need to collapse the stroller to board the tram.
- You will NOT need to collapse the stroller to ride the Skyliner.
- Do not leave personal belongings in an unattended stroller.
- Strollers may be moved by a Cast Member due to operational needs.





# STROLLERS FROM *Disney*

*Renting a stroller from Disneyland is a simple, streamlined process. The rental procedure is fast and efficient, and a central stroller rental facility is in the Esplanade between Disneyland and DCA, to the right of the Disneyland Park entrance. Note: rented strollers are not permitted in Downtown Disney*

## *Prices*

### **Single stroller**

\$18 per day with no deposit

### **Double stroller**

\$36 per day with no deposit

*\*Stroller rentals at Disneyland do not require a deposit.*

The strollers from Disneyland come with sun canopies and small cargo compartments under the seat. If you rent a stroller and later decide to go back to your hotel for lunch, a swim, or a nap, turn in your stroller but keep your rental receipt. When you return to either park later in the day, present your receipt, and you will be issued another stroller at no additional charge.

**Pro Tip:** Consider adding a name tag or other signifier to your stroller to help prevent anyone accidentally taking yours while on rides!



# THIRD-PARTY STROLLER VENDORS

*If you don't bring your own or rent from Disney*



*Traveling Baby Company*

*City Stroller Rental*

"Families on the go won't need to waste precious vacation time wondering how to pick up their baby gear - Traveling Baby Company does this for you! Have a friendly staff member meet you at the airport with car seats complimentary, or stand back while experts set up your cribs, seats, papasans, and more right in your hotel room."

**Website:**

**[www.travelingbaby.com](http://www.travelingbaby.com)**

**Phone: 818-732-4260**

"Our Fleet is compliant with the Disney Stroller Restrictions Rules. We provide a large inventory of clean/sanitized baby equipment, stroller rentals, stroller repair (flat tire) & necessities for traveling families with children in the Disneyland Resort Area. Need your personal stroller cleaned while here in Anaheim? We will provide a rental in place of your personal stroller while we clean, sanitize and lubricate yours."

**Website:**

**[www.citystrollerrentals.com](http://www.citystrollerrentals.com)**

**Phone: 1-877-787-5537**





# ENCHANTING EXTRAS

---

ENHANCE & PERSONALIZE YOUR VACATION

---

## **Galaxy's Edge custom Astromech**

Build your own droid, one of the galaxy's most indispensable sidekicks! Starting from \$99.99 per droid unit, plus tax.



## **Savi's Workshop - Handbuilt Lightsaber**

Build your own custom lightsaber and continue the way of the Force. Starting from \$219.99 per light saber, plus tax.



## **World of Color Dessert Party**

Experience World of Color from premium seats in Paradise Gardens Park—and help yourself to a world of sweet treats. Starting from \$89



## **Bibbidi Bobbidi Boutique**

Behold a royal transformation as kids become elegant princesses and shining knights—right before your eyes! Starting from \$99.95



## **Disneyland After Dark**

Each 4-hour after-park hours event is packed with fun festivities and unique offerings that you simply won't experience during regular daytime visits. Pricing varies.



# CHARACTER MEET & GREET

WHEN & WHERE TO FIND YOUR FAVORITE CHARACTERS



Hollywoodland @ DCA

Spiderman



Fantasy Faire  
Fantasyland @ Disneyland Park

Princesses



Ancient Sanctum  
Avengers Campus @ DCA

Doctor Strange



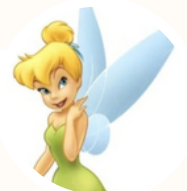
Avengers Campus @ DCA

Star-Lord & Gamora



Grizzly Peak @ DCA

Raya



Fantasyland @ Disneyland Park

Tinkerbell





# Rider Switch Guide

## THE BEST OF BOTH WORLDS

### What Is Rider Switch?

An important tool at your disposal during your time at Disney is going to be their program called "Rider Switch". Rider Switch allows friends and family of any guests who don't meet the boarding requirements of a ride or don't wish to experience a particular attraction to still experience an attraction.

### How Do I Use Rider Switch?

Take the following steps to utilize Rider Switch when approaching an attraction:

1. First check with a Cast Member to see if Rider Switch is offered at the attraction you'd like to experience.
2. Upon arriving at the selected attraction, approach the greeting Cast Member with your entire group. Members will be divided into 2 parties.

"Party 1" includes those riding the attraction first, while "Party 2" consists of non-riders and their supervising Guests.

3. The supervising Guests of Party 2 - which can include a maximum of 3 people - will have their admission media/tickets scanned and must wait in the designated area - usually outside the attraction - while Party 1 waits in line to experience the attraction.

4. After Party 1 experiences the attraction, they'll assume supervision of the non-riding Guests.

5. The supervising Guests of Party 2 should then return to the appropriate attraction entrance (e.g. attraction exit) to have their admission media/tickets re-scanned by a Cast Member for the Rider Switch entitlement. At this point, Party 2 may enter the appropriate attraction return line and board without waiting in the regular queue.

**View the complete list of rides that utilize Rider Switch below**



**RIDER SWITCH**

# DISNEY SUCCESS TIPS

## WHAT TO DO IF THINGS GO WRONG



### **RAIN**

Check the weather each morning and be prepared with rain gear: Ponchos, umbrellas, an extra pair of shoes and stroller covers. Most outdoor attractions will continue as long as there is no lightning. Keep an eye out for the Rainy Day Cavalcade - a special parade with bright and colorful rain gear!



### **LATE OR MISSED ADVANCE DINING RESERVATION**

Sometimes things happen and you might miss an Advance-Dining reservation. Know that there is usually a 15-minute grace period for dining reservations. You can even try to modify your time using the My Disney Experience app. If you are unable to modify your dining reservation, speak with a cast member or contact guest services (714-781-4565) and they will be able to assist!



### **SICK/INJURIES**

Disneyland has its own Fire Department, First Responder Unit, and First Aid Centers that will have everything from bandaids to Pedialyte. You can find First Aid Centers by using the My Disney Experience app or asking a Cast Member. The most common issue guests face is dehydration: so make sure to utilize the FREE water at ANY counter service location!



### **MELTDOWNS**

Because children at Disney are often over-stimulated, not getting enough sleep, and have consumed too much sugar, meltdowns are a common occurrence. If/when this happens in your family, stay calm, take a break, and get some decent food. Consider finding a quiet spot or returning to your hotel for a nap or dip in the pool to regroup.



### **LOST ITEMS**

There is a Lost & Found center at each park. Use the My Disney Experience app or speak with a cast member to help you locate it. If the item isn't there, Disney uses an online system called Chargerback that allows you to answer questions and Disney will respond within 48 hours. If the item is found, they will ship it to you free of charge.



### **RIDE BREAKDOWNS**

If a ride breaks down while you're on it, it is important to follow directions and listen to cast members for your safety. All rides are built with an internal evacuation system, but often the safest option for ride engineers is to get the ride going again rather than evacuate.



### **LOST CHILD**

If you lose a child while at Disneyland, report the situation to a Disney employee; then check in at City Hall (Disneyland Park) or Guest Relations (DCA) where lost-children logs are maintained. In an emergency, an alert can be issued throughout the park, but cast members are well trained in how to handle this scenario.





**All information in this guide is  
subject to change.**