



# WALT DISNEY WORLD

## *Rides and Attractions Guide*

*A Guide to All the Things to See and Do at Disney World*

# Magic Kingdom

## Top Attractions



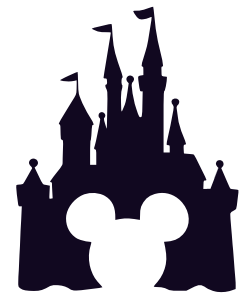
### Top Rides in Red


- **The Barnstormer (35" tall)** - Small roller coaster for kids new to coasters. If you want to see how your child handles riding coasters, this is the perfect testing ground.
- **Big Thunder Mountain Railroad (40" tall to ride)** - Western mining-themed coaster. A fun and entertaining queue but a rough ride.
- **Buzz Lightyear's Space Ranger (all ages)** - Combination space travel-themed indoor ride and shooting gallery. A real winner - not to be missed!
- **Dumbo the Flying Elephant (all ages)** - Disney's signature ride for children. Has a play area with interactive elements.
- **The Hall of Presidents** - Behold all 45 Presidents of the United States in a stirring show tracing the nation's history.
- **It's a Small World** - Indoor boat ride. Small boats carry visitors on a tour around the world, with singing and dancing dolls showcasing the dress and culture of each nation
- **Jungle Cruise** - Outdoor boat ride, fun and relaxing, and full of "Dad Jokes". Some macabre sights might frighten young children.



# Magic Kingdom

## Top Attractions



- Mad Tea Party (all ages) - Midway-themed spinning ride. You can make the teacups spin faster by turning the  in the center. Not for those prone to motion sickness!
- Magic Carpets of Aladdin (all ages) - Climb aboard a colorful, flying "rug" and take off into the air to the soothing sounds of Middle Eastern music. Soar around a giant genie bottle and magic lamp and enjoy a new view of the colorful bazaar below. Meet Jasmine & Aladdin nearby at Agrabah Bazaar.
- The Many Adventures of Winnie the Pooh (all ages) - Ride in a "Hunny Pot" through the pages of a huge picture book into the Hundred Acre Wood. Meet Pooh and Tigger nearby throughout the day.
- Mickey's Philharmagic (all ages\*) - A 3D movie featuring Mickey and Donald along with other favorites!
- Monsters, Inc. Laugh Floor (all ages) - Interactive animated comedy routines. Behind the scenes Disney employees voice the characters and often interact with audience members.
- Peter Pan's Flight (all ages) - This dark ride (indoor) takes you on a relaxing trip in a "flying pirate ship" over old London and to Never Land.
- TRON Lightcycle / Run - Climb aboard your very own Lightcycle and speed across a world with no horizons in a high-stakes race based on the Disney sci-fi film TRON: Legacy.



# Magic Kingdom

## Top Attractions



- Pirates of the Caribbean (all ages) - Indoor pirate-themed adventure boat ride. Intense boat ride with somewhat gruesome sights and a short, unexpected slide down a flume.
- Princess Fairytale Hall (all ages) - Four royals meeting & greeting at any time & you can see two of them at once. Signs outside the entrance tell you which line leads to whom and how long the wait will be.
- Seven Dwarfs Mine Train (38" tall to ride) - Another great roller coaster for first time kiddos! While a popular ride, some believe that older grade school children may gravitate toward Space Mountain or Big Thunder Railroad.
- Space Mountain (44" tall to ride) - Roller coaster in the dark! Involves sudden blackouts, abrupt turns & plummets. Many love this attraction, but if you're not a thrill-seeker this ride is not for you.
- Splash Mountain (40" tall to ride) - Indoor/outdoor water-flume adventure ride. Most of the ride is slow, but the 52ft plunge down a steep chute at the end is a thrill. You WILL get wet on this ride! (Temporarily closed as it's being re-imagined)
- Tomorrowland Speedway (32" tall to ride w/adult - 54" to drive unassisted) - Drive-em' yourself mini-cars. Your child controls the steering wheel while you control the foot pedals. Children will feel like they're really driving, even though they are on a self-guiding track.



# Magic Kingdom

## ONE-DAY ITINERARY

**7:00am:** Book Virtual Queue for TRON

**8:00am:** Arrive early to avoid the crowds and enjoy the early morning coolness. Park your car at the parking lot or use the Disney transportation system to reach the park.

**8:30am:** Head to Main Street USA, the entrance to the Magic Kingdom, and take in the sights and sounds of the iconic street. Grab a coffee and breakfast snack if needed. (Starbucks is located on Main St.)

**9:00am:** Head to Adventureland, and start your day with an exciting attraction like the Jungle Cruise, Pirates of the Caribbean, or the Enchanted Tiki Room.

**10:30am:** Move on to Frontierland and experience the thrilling Big Thunder Mountain Railroad ride or splash down the river rapids at Splash Mountain.

**12:00pm:** Lunch Break: Grab a quick bite to eat at one of the many dining options in the park. Try the famous Dole Whip at Aloha Isle or a turkey leg at Frontierland Turkey Leg Cart.

**1:00pm:** Fantasyland: Explore Fantasyland, home to classic Disney attractions like "It's a Small World," Peter Pan's Flight, and the Seven Dwarfs Mine Train.

**3:00pm:** Tomorrowland: Visit Tomorrowland and take a ride on Space Mountain or Buzz Lightyear's Space Ranger Spin.

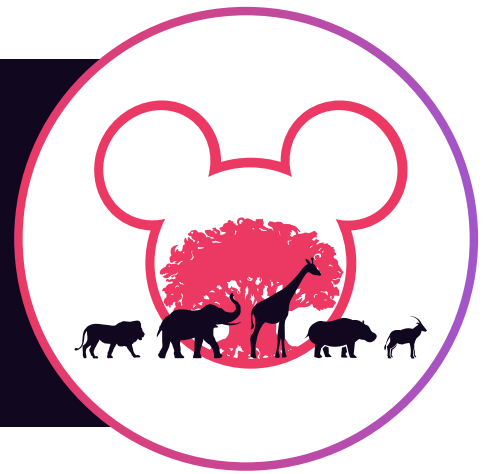
**4:30pm:** Main Street USA: Return to Main Street USA to do some souvenir shopping or take in a parade like the Festival of Fantasy Parade.

**6:00pm:** Dinner: Enjoy a sit-down dinner at one of the many restaurants in the park. Make reservations in advance for popular spots like Be Our Guest.

**7:30pm:** Happily Ever After: End your day at Magic Kingdom with the spectacular nighttime show, Happily Ever After. Watch as fireworks, projection mapping, and music come together for a magical finale.

# Animal Kingdom

## Top Attractions

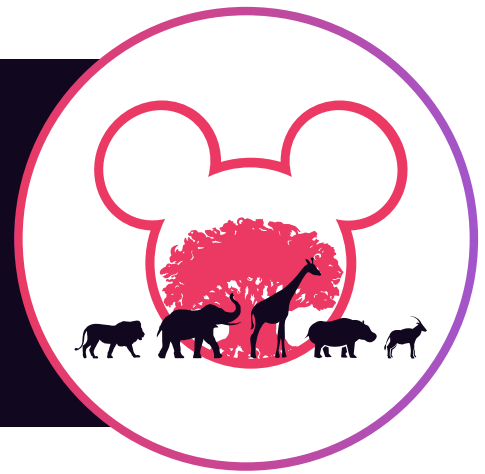


- Avatar Flight of Passage (44" tall to ride) - Flight simulator. Here you ride a banshee from the movie Avatar. Super headliner attraction! However, it may induce motion sickness and a snug restraint system may cause some claustrophobia.
- Na'vi River Journey (all ages) - Indoor boat ride. Travel through the nighttime jungle on a sacred river, discover the creatures of the rainforest and meet the Na'vi shaman of songs.
- The Animation Experience (all ages) - Character drawing class. Guests are taught to draw some of Disney's most famous animal characters in a 25-minute class.
- Dinosaur (40" tall to ride) - Motion simulator dark ride. Not for the faint of heart- the ride is dark and tosses you around with pesky dinosaurs jumping out. Most kids under the age of 9 find it terrifying.
- Expedition Everest (44" tall to ride) - High-speed outdoor roller coaster. The ride is very smooth and a must for coaster lovers, but not suitable for young children; even if they meet the height requirement.
- Festival of the Lion King (all ages) - Theater-in-the-round stage. A mini Broadway show based on The Lion King. Loud but not frightening!



# Animal Kingdom

## Top Attractions



- Finding Nemo: The Big Blue...and Beyond - (all ages) - With live performers, animated backdrops and a theater decked out with innovative lighting, sound and special effects to create Nemo's undersea environment, this newly updated show takes you back to the extraordinary underwater world—all over again!
- It's Tough to Be a Bug! (all ages) - 3D theater show. A clever show but very intense. The show is about bugs and is coupled with special effects, which may scare kids 7 and under. But for the rest of us, a great show that many find fun!
- Kali River Rapids (38" tall to ride) - Skim across an erupting geyser, drift below a canopy of lush vegetation, and be whisked along fast-moving rapids. Includes a 20-foot plummet.
- Kilimanjaro Safaris (all ages) - Truck ride through an "African wildlife reservation". Here you can spot hippos, zebras, giraffes, lions, rhinos, and more. Very well done safari ride. The landscape and animals are stunning! Very popular attraction and long lines begin to form quickly.
- TriceraTop Sping (all ages)- Climb into a triceratops gondola and prepare for liftoff! Bob up and down, forward and back, as you sail through the air to festive music.



# Animal Kingdom

## ONE-DAY ITINERARY

**8:00am:** Arrive at the park early to avoid long lines and crowds at security.

**8:30am:** Grab breakfast at one of the quick-service restaurants like Creature Comforts.

**9:30am:** Head over to Pandora – The World of Avatar and get in line for Avatar Flight of Passage, a thrilling ride that simulates flying on the back of a banshee.

**10:30am:** Visit the Na'vi River Journey: Take a leisurely boat ride through the bioluminescent forests of Pandora and encounter the Na'vi Shaman of Songs.

**11:30am:** Make your way to the Harambe Theater and enjoy the spectacular live show featuring characters from The Lion King.

**12:30pm:** Lunch: Stop for a quick bite to eat at a quick-service restaurant like Satu'li Canteen, Flame Tree Barbecue or Harambe Market.

**1:30pm:** Visit Kilimanjaro Safaris: Hop aboard a safari vehicle and embark on a wildlife adventure to see animals like elephants, giraffes, lions and more in their natural habitats.

**3:00pm:** Explore the Maharajah Jungle Trek: Walk through a lush forest filled with ancient ruins and see tigers, bats, birds, and other exotic animals.

**4:00pm:** Visit Expedition Everest: Experience the thrilling Expedition Everest rollercoaster ride that takes you on a journey through the Himalayas.

**5:00pm:** Watch the Finding Nemo: The Big Blue and Beyond: Head to the Theater in the Wild and watch the beloved Pixar film come to life in an enchanting musical.

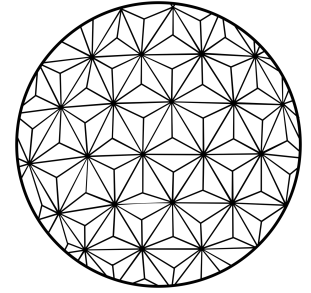
**6:00pm:** Enjoy a sit-down dinner at one of the park's restaurants like Tiffins, Yak & Yeti Restaurant, or Rainforest Cafe.

**7:30pm:** Finish your day with the Tree of Life Awakening. Watch in wonder when the animal spirits within the great tree awaken during a mesmerizing showcase of colour and light.



# Epcot

## Top Attractions

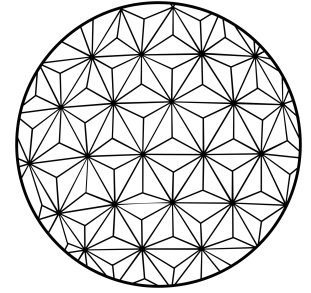


- Epcot Forever (all ages) - Witness the wonder as the story of EPCOT and its next incredible chapter come to life in this nighttime spectacular. Behold the single “spark of imagination” that started it all. With dazzling fireworks and stunning laser effects set to tunes that have become theme park favorites.
- Soarin' (40" tall to ride) - Flight simulator ride. Here you'll feel like you're hang-gliding around the world! Special effects include wind, sound, and even smell! The ride itself is thrilling but perfectly smooth.
- Test Track (40" tall to ride) - Automobile test track simulator ride. Intense ride that may frighten guests of any age. Often a favorite of teens! Here you design a vehicle then go for an actual drive through Chevrolet's test track. You will test braking maneuvers, cornering, and acceleration of up to 65 mph.
- Frozen Ever After (all ages)- High up in the icy blue world of the North Mountain, Elsa's enchanting ice palace awaits. This enchanting “Summer Snow Day” celebration—complete with many of your favorite Frozen tunes—is sure to melt even the coldest hearts!
- Journey into Imagination with Figment (all ages) - Dark fantasy-adventure ride. Figment (the purple dinosaur) takes you on a tour of the imagination institute with the help of your five senses. Watch out for the gust of wind at the end!
- Remy's Ratatouille Adventure (all ages) - Feel like you've shrunk down to Chef Remy's size for a 4D culinary adventure based on the Disney and Pixar film Ratatouille. When you're small, life is a big adventure!



# Epcot

## Top Attractions



- Spaceship Earth (all ages) -Educational dark ride through past, present and future. Audio-Animatronic scenes depict mankind's development in communications from cave paintings to the internet.
- Living with the Land (all ages) -Indoor boat ride adventure through the past, present and future of US farming and agriculture. A lot of the produce grown here is served to guests in the restaurants at Epcot.
- The Seas with Nemo & Friends (all ages) -Ride through a tunnel in The Seas' main tank. Here you will board a "clamobile" for our journey through the aquarium. The technology used makes it appear as if the animated characters are swimming with the live fish.
- Turtle Talk with Crush (all ages)- An interactive animated film. This show stars the sea turtle Crush, from the film Finding Nemo. Here, he and a few of his friends from Finding Dory interact with audience members. A great family show for all!
- Mission Space (Green or Orange) (40" tall to ride)- Space flight simulation ride. Each guest plays the role of someone in a flight crew and is required to perform certain functions during the flight. Orange Mission will experience G-forces. A less intense Green Mission takes guests on an orbital adventure around Earth.
- Guardians of the Galaxy (42" tall)- Take off on an intergalactic chase through space and time with the Guardians of the Galaxy. Features the first ever reverse-launch on a Disney coaster and rotates 360 degrees!





## ONE-DAY ITINERARY

**7:00 am:** Book Virtual Queue for Guardians of Galaxy

**8:00am:** Arrive at the park early to avoid long lines and crowds at security.

**8:30am:** Grab breakfast at one of the quick-service restaurants like Sunshine Seasons or Les Halles Boulangerie-Patisserie.

**9:30am:** Head over to The Land pavilion and experience the exhilarating Soarin' Around the World ride, which takes you on a simulated hang glider flight.

**10:30am:** Visit Living with the Land: Take a leisurely boat ride through Living with the Land and learn about the innovative techniques used to grow crops and fish sustainably.

**11:30am:** Explore World Showcase: Stroll through the various pavilions and experience the cultures, food, and entertainment of different countries, such as Mexico, Norway, China, Germany, and more.

**1:00pm:** Lunch: Our Favorite is the Les Halls Boulangerie in France. The Sandwiches and desserts are amazing. Or Stop for a quick bite to eat at a quick-service restaurant like Yorkshire County Fish Shop, Tangerine Café, or Katsura Grill.

**2:00pm:** Visit The Seas with Nemo & Friends: Explore the underwater world with Nemo and Dory, and see a variety of sea creatures in the aquariums.

**3:00pm:** Visit Spaceship Earth: Take a journey through time and learn about the history of human communication, from cave paintings to the internet.

**4:00pm:** Visit Test Track: Design your own car and test it out on the thrilling Test Track ride, which reaches speeds of up to 65 mph.

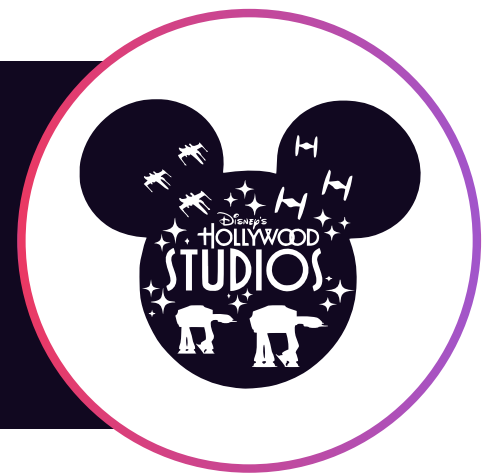
**5:00pm:** Head to the American Adventure pavilion and watch the inspiring show that tells the story of America's history and culture.

**6:00pm:** Dinner: Enjoy a sit-down dinner at one of the park's restaurants like Le Cellier Steakhouse, Rose & Crown Dining Room, or Teppan Edo.

**7:30pm:** Finish your day with the nighttime spectacular, Epcot Forever, which features fireworks, lasers, and fountains, and celebrates the history of Epcot.

# Epcot

## Top Attractions



- Toy Story Mania (all ages) - 3D ride through an indoor shooting gallery. The pull string cannon on your ride vehicle takes advantage of computer-generated imagery to toss rings, shoot balls, and even throw pies.
- Alien Swirling Saucers (32" tall to ride) - Spinning car ride. Think the scrambler ride from the county fair but with trackless technology and a lot less neck breaking. Fun ride for kiddos!
- Slinky Dog Dash (38" tall to ride) - Outdoor roller coaster. Themed to Toy Story's Slinky Dog. The ride is more intense than the Magic Kingdom's Barnstormer and Seven Dwarf Mine Train. Lots of hills but no loops or high speed curves. Long lines early!
- The Twilight Zone Tower of Terror (40" tall to ride) - Sci-fi themed indoor thrill ride. Visually intimidating to young children; contains intense, realistic special effects. The plummeting elevator at the end of the ride frightens many adults. Many children don't like the feeling of being pulled out of their seats. A big hit with teens!
- Rise of the Resistance (40" tall to ride) - A combined trackless dark ride, walk-through, motion simulator, and drop ride system. Riders are in the middle of an altercation between the Resistance and the First Order. Intense ride that may frighten children under 8.



# Epcot

## Top Attractions



- Millennium Falcon Smugglers run (38" tall to ride) - A motion simulator attraction in Galaxy's Edge. Guests enter the iconic Millennium Falcon starship for a secret interactive smuggling mission, with each passenger playing a role in the completion of the mission. (Be careful how you fly because your flight team's collective success or failure will be remembered by characters you encounter later around the land!)
- Mickey & Minnie's Runaway Railroad (all ages) - The first Mickey Mouse-themed ride-through attraction at a Disney theme park, this trackless "dark ride" is based on the stylized world from the television series. \*May cause motion-sickness\*
- Beauty and the Beast - Live on Stage (all ages) - This Live musical, featuring Disney characters is performed in an open-air theater. The show is popular so be sure to show up 30 minutes early to get a seat if you don't use Lightning Lane.
- Muppet-Vision 3D (all ages) - 3D movie starring The Muppets. This show is a great attraction for all ages! The presentation can be intense and a little loud, so if you have a small child who is a little scared, encourage them to view it without the 3D glasses.



# Hollywood Studios

## ONE-DAY ITINERARY

**8:00am:** Arrive at the park early to avoid long lines and crowds at security.

**8:30am:** Grab breakfast at one of the quick-service restaurants like Docking Bay 7 Food and Cargo, Woody's Lunch Box or the Trolley Car Café.

**9:30am:** Head over to Toy Story Land and get in line for Slinky Dog Dash, a family-friendly rollercoaster that's a must-do for fans of the film.

**10:30am:** Make your way to the Hyperion Theater to watch For the First Time in Forever: A Frozen Sing-Along Celebration.

**11:30am:** Visit Star Wars: Galaxy's Edge, explore the shops and sights, and maybe even build your own droid or lightsaber at Droid Depot or Savi's Workshop.

**1:00pm:** Lunch: Stop for a quick bite to eat at a quick-service restaurant like Ronto Roasters or Docking Bay 7 Food and Cargo.

**2:00pm:** Watch Beauty and the Beast Live on Stage: Catch the live stage show of the classic tale at the Theater of the Stars.

**3:00pm:** Experience the iconic Tower of Terror attraction, which takes you on a thrilling ride through a haunted hotel.

**4:00pm:** Head to the Indiana Jones Stunt Spectacular and watch the daring stunts and special effects.

**5:00pm:** Explore Pixar Place: Check out the Incredibles-themed area or visit the Toy Story Mania! ride.

**6:00pm:** Dinner: Enjoy a sit-down dinner at one of the park's restaurants like Hollywood & Vine, 50's Prime Time Café or The Hollywood Brown Derby.

**7:30pm:** Finish your day with the nighttime spectacular, Fantasmic!, which features water, fireworks, and pyrotechnics, and brings together classic Disney characters.

# TRON LIGHTCYCLE RUN

## DISNEY'S NEWEST ATTRACTION

### RIDE DETAILS

- 48" (122cm) or taller can ride
- Best for kids, teens, & adults
- Big Drops, thrill ride, dark
- Attraction Photography
- Use Virtual Queue or Individual Lightning Lane passes



### About TRON

Disney made history in 1982 with the release of TRON, a groundbreaking film that combined live-action footage with computer-generated imagery and backlit animation. This legendary film not only inspired video games, comic books, and an animated series but also a Disney theme park attraction.

TRON Lightcycle / Run is a high-speed roller coaster ride where guests can race against the Grid's most fearsome Programs on their very own Lightcycles. The goal is to pass through 8 Energy Gates and emerge victorious over the other opponents. This attraction is among the fastest coasters at any Disney theme park in the world.

### How to Ride TRON

To enter this attraction, guests will need to use the My Disney Experience app to join a virtual queue, as there will be no standby queue available. Each guest is allowed to request to join the virtual queue only once per day during regular park hours. Boarding groups for the virtual queue are limited and subject to availability, and late arrivals may not be accommodated.

Guests also have the option to purchase individual Lightning Lane entry for TRON Lightcycle / Run. However, Lightning Lane entry purchases are limited in availability, subject to change or closure, may vary by date, and are not guaranteed. Please refer to important information about the virtual queue before planning your visit.

[LEARN MORE HERE](#)

# ENCHANTING EXTRAS

ENHANCE & PERSONALIZE YOUR VACATION

## Droid Depot

Build your own droid, one of the galaxy's most indispensable sidekicks! Starting from \$119.99



## Savi's Workshop - Handbuilt Lightsaber

Build your own custom lightsaber and continue the way of the Force. Starting from \$249.99



## Dawn to Life - Cirque du Soleil

Watch in wonder as the beauty of Disney animation blends with the thrilling spectacle of Cirque du Soleil!



## Magic Kingdom Fireworks Dessert Party

End your Disney day in a magical way—with tantalizing treats and fantastic fireworks. \$99+





# ENCHANTING EXTRAS

ENHANCE & PERSONALIZE YOUR VACATION

## Disney VIP Tours

Create your Disney dream day & explore the parks with an official VIP Guide. Prices vary.



## Ferrytale Fireworks: Dessert Cruise

Delight in desserts, drinks, and views of fireworks aboard a ferryboat. Starting from \$99  
From March 30 through July 5, 2023, Ferrytale Fireworks will be closed for refurbishment.



## Capture Your Moment

Commemorate your celebration with a photo session including a view of iconic Cinderella Castle. \$50+



## Horse Drawn Excursion

Relax on a horse-drawn carriage ride along the scenic banks of the Sassagoula River. Starting at \$55



# PRINCESS MEET & GREETs

WHEN & WHERE TO FIND YOUR FAVORITE PRINCESSES



*Cinderella*

*The Royal Princess Processional (Magic Kingdom)*  
*Cinderella's Royal Table (Magic Kingdom)*  
*FairyTale Hall (Magic Kingdom)*

*Pocahontas*

*Boat Promenade (Animal Kingdom)*



*Merida*

*The Royal Princess Processional (Magic Kingdom)*  
*FairyTale Garden (Magic Kingdom)*

*Elena*

*The Royal Princess Processional (Magic Kingdom)*



*Belle*

*The Royal Princess Processional (Magic Kingdom)*  
*Meet-and-Greet; Epcot; usually France)*  
*Enchanted Tales with Belle (Magic Kingdom)*

*Tiana*

*FairyTale Hall (Magic Kingdom)*  
*The Royal Princess Processional (Magic Kingdom)*



*Moana*

*Magic Kingdom Cavalcade (Magic Kingdom)*

# PRINCESS MEET & GREETs

WHEN & WHERE TO FIND YOUR FAVORITE PRINCESSES



*Ariel*

*Akershus Royal Banquet Hall (Epcot)*  
*The Royal Princess Processional (Magic Kingdom)*  
*Ariel's Grotto (Magic Kingdom)*



*Jasmine*

*Meet and Greet Adventureland (Magic Kingdom)*  
*Meet-and-Greet (Epcot; usually Morocco)*

*Elsa*

*Meet-and-Greet (Epcot; usually Norway)*  
*Frozen Sing-Along (Hollywood Studios)*

*Aurora*

*The Royal Princess Processional (Magic Kingdom)*  
*Meet-and-Greet (Epcot; usually France)*



*Snow White*

*The Royal Princess Processional (Magic Kingdom)*  
*Meet-and-Greet; (Epcot; usually Germany)*  
*Storybook Dining @ Artist Point (Dinner)*

*Rapunzel*

*The Royal Princess Processional (Magic Kingdom)*



*Anna*

*Meet-and-Greet (Epcot; usually Norway)*  
*Frozen Sing-Along (Hollywood Studios)*

*Mulan*

*The Royal Princess Processional (Magic Kingdom)*  
*Meet-and-Greet (Epcot; usually China)*

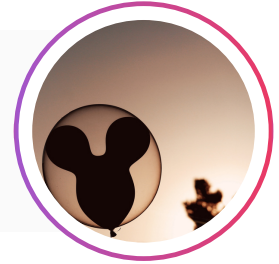


# Character Dining

Meet your favorites!

## **GARDEN GRILL**

You'll meet: Chip & Dale & Friends  
Where: Epcot

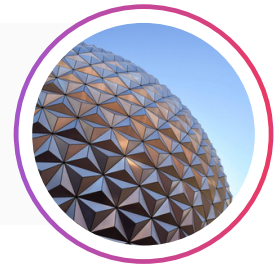


## **TOPOLINO'S TERRACE BREAKFAST**

You'll meet: Mickey, Minnie, Donald & Daisy  
Where: Riviera Resort

## **CHEF MICKEY'S**

You'll meet: Mickey w/ Fab 5 (\*Breakfast and dinner only)  
Where: Contemporary Resort



## **TUSKER HOUSE**

You'll meet: Donald & friends  
Where: Animal Kingdom

## **HOLLYWOOD & VINE**

You'll meet: Disney Jr at Breakfast and Minnie & friends for lunch/dinner  
Where: Hollywood Studios



## **CINDERELLA'S ROYAL TABLE**

You'll meet: Cinderella and friends  
Where: Magic Kingdom

## **BE OUR GUEST**

You'll meet: The Beast (\*Dinner only)  
Where: Magic Kingdom



## **STORYBOOK DINING AT ARTIST POINT**

You'll meet: Snow White & Friends (\*Dinner only)  
Where: Wilderness Lodge Resort

# Character Dining

Meet your favorites!

## CRYSTAL PALACE

You'll meet: Winnie the Pooh Characters  
Where: Magic Kingdom



## CAPE MAY CAFE

You'll meet: Minnie Mouse & friends (\*Breakfast only)  
Where: Epcot Resort Area



## 'OHANA

You'll meet: Lilo, Stitch, and other friends (\*Breakfast Only)  
Where: Disney's Polynesian Village Resort

## AKERSHUSH

You'll meet: A royal promenade of princess friends  
Where: Epcot



## 1900 PARK FARE - BREAKFAST

You'll meet: Mary Poppins, Alice in Wonderland, Winnie the Pooh  
Where: Grand Floridian Resort

## 1900 PARK FARE - DINNER

You'll meet: Cinderella & her Step Sisters  
Where: Grand Floridian Resort



**View the complete list of Character Dining opportunities:**

**CHARACTER DINING**



**All information in this guide is subject to change.**